

WIFR.COM

53
Overcast
Humidity 89%
Calm



Home Weather News Sports Andy and Aaron Contests Community Classifieds 23 Exclusives Entertainment Station Video

[Back to HomePage](#)



Posted: 12:22 PM Oct 26, 2009

Rochelle Railroad Attraction

Rochelle is one of very few towns to be home of a double diamond.



Story **2 Comments**

Font Size: [A](#) [A](#) [A](#)

That's where two sets of railroad tracks cross, making the shape. It's so unique, people from throughout the area flock to check it out. And now, town leaders are trying to turn it more into a tourist attraction. Rochelle tourism officials are awaiting confirmation on a 1.4 million dollar grant from the Illinois [Department of Transportation](#).

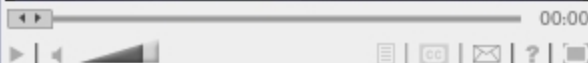
This money would help build an RV park near the tracks. The plan is to also move the gift shop and turn it into an interactive experience.

"We're going to have a replica depot gift shop that will have a basement that will hopefully house a model railroaders club for youth and adults... and we'll have RV [parking](#) on one of the parcels of land and hopefully some additional parking," says Rochelle Tourism Director Ross Freier.

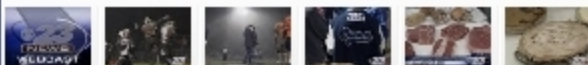
Freier says the additional parking is necessary because too often visitors wind up leaving their cars on the street, potentially tying up traffic.

23 ToGo am Webcast

01:58



HOME



PREVIOUS 1 | 2 | 3 | 4 | 5 | 6 | 7 NEXT

Main Street Meat Co.
Main Street Square in Roscoe